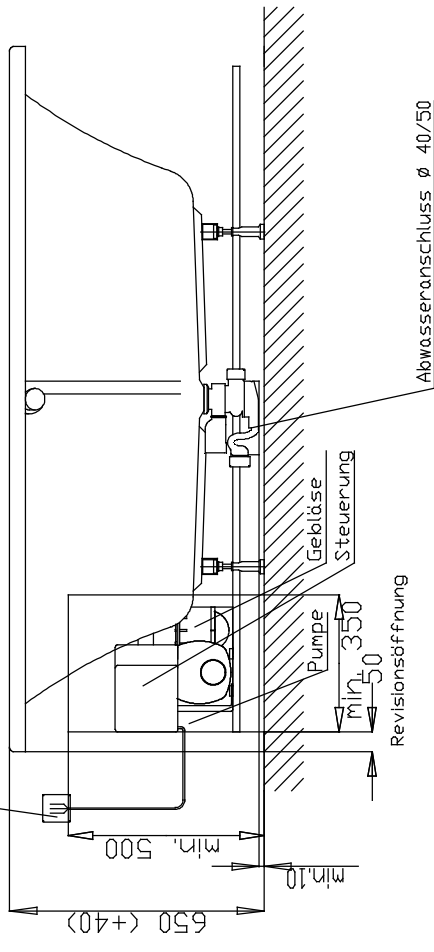
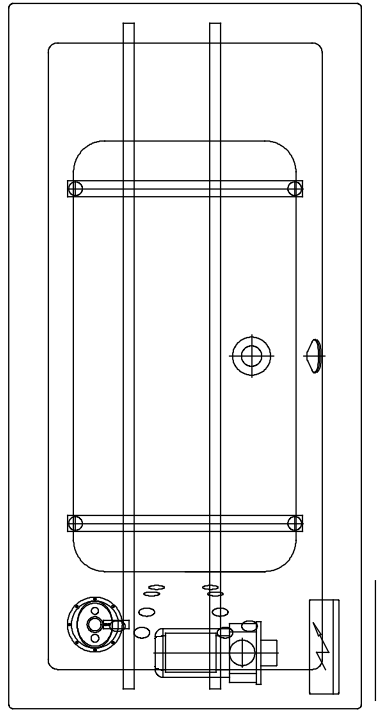


Netzanschluss Steuerung
230V~, 50/60 Hz, 10A
Anschlussdose bauseits



Fernbedienung □



Aggregatanordnung

Technical drawing of the sink assembly showing side and top views. The side view shows the sink mounted on a wall with a minimum clearance of 10 mm from the wall and 500 mm from the floor. The top view shows the sink with a minimum clearance of 50 mm from the wall and 350 mm from the floor. Labels include: 'Pumpe' (pump), 'Gebäuse Steuerung' (control housing), 'Revisionsöffnung' (access opening), and 'Abwasseranschluss Ø 40/50' (wastewater connection).

001

Technical drawing of the sink assembly showing side and top views. The side view shows the sink mounted on a wall with a minimum clearance of 10 mm from the wall and 500 mm from the floor. The top view shows the sink with a minimum clearance of 50 mm from the wall and 350 mm from the floor. Labels include: 'Pumpe' (pump), 'Gebäuse Steuerung' (control housing), 'Revisionsöffnung' (access opening), and 'Abwasseranschluss Ø 40/50' (wastewater connection).

002

Alle Maßangaben in mm. Technische Änderungen vorbehalten				Benennung :		Sclta 1800x900 Mittelablaufwanne		HOESCH Postfach 10 04 24 D-52304 Düren	
D									
C									
B									
A									
Zeichnung erstellt				09.08.2014 Essee		Format A4		System	
						Tergum		Art.-Nr.: 3671N	